

Environmental Health Injustice

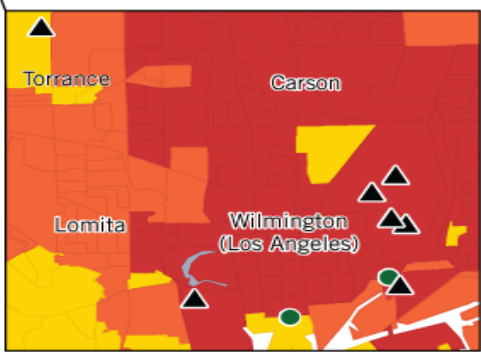
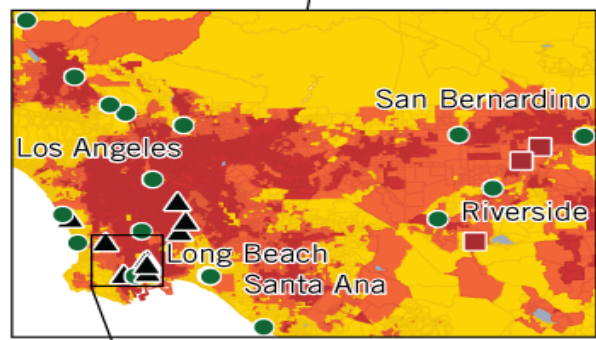
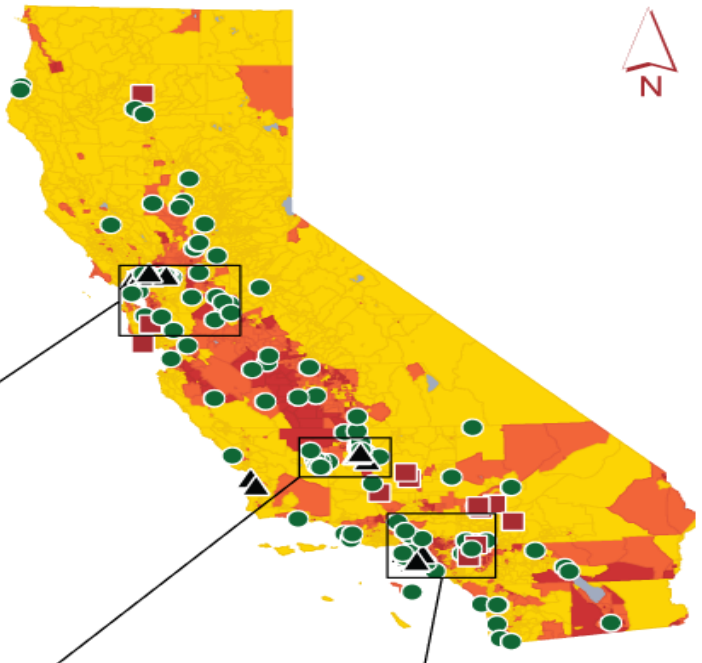
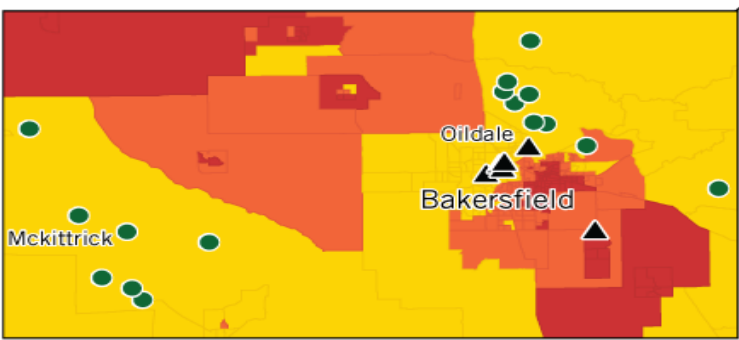
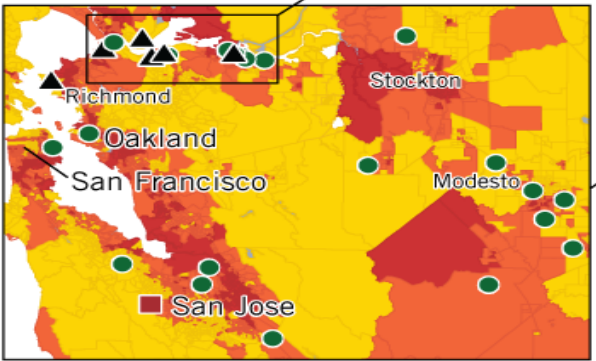
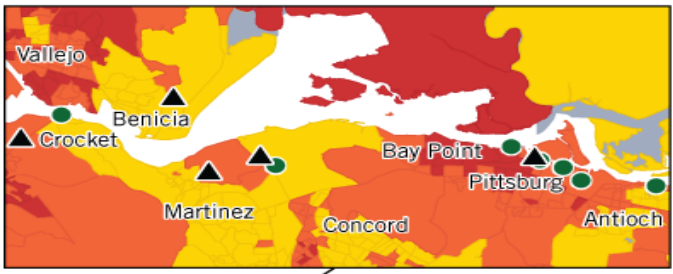
Ralph DiLibero, MD
Los Angeles County Medical Association

**"Of all forms of inequality,
injustice in health
is the most shocking, and
the most inhumane."**

--Martin Luther King, Jr.

AIR POLLUTION

**pollution emissions
and people are
distributed unevenly
in California**



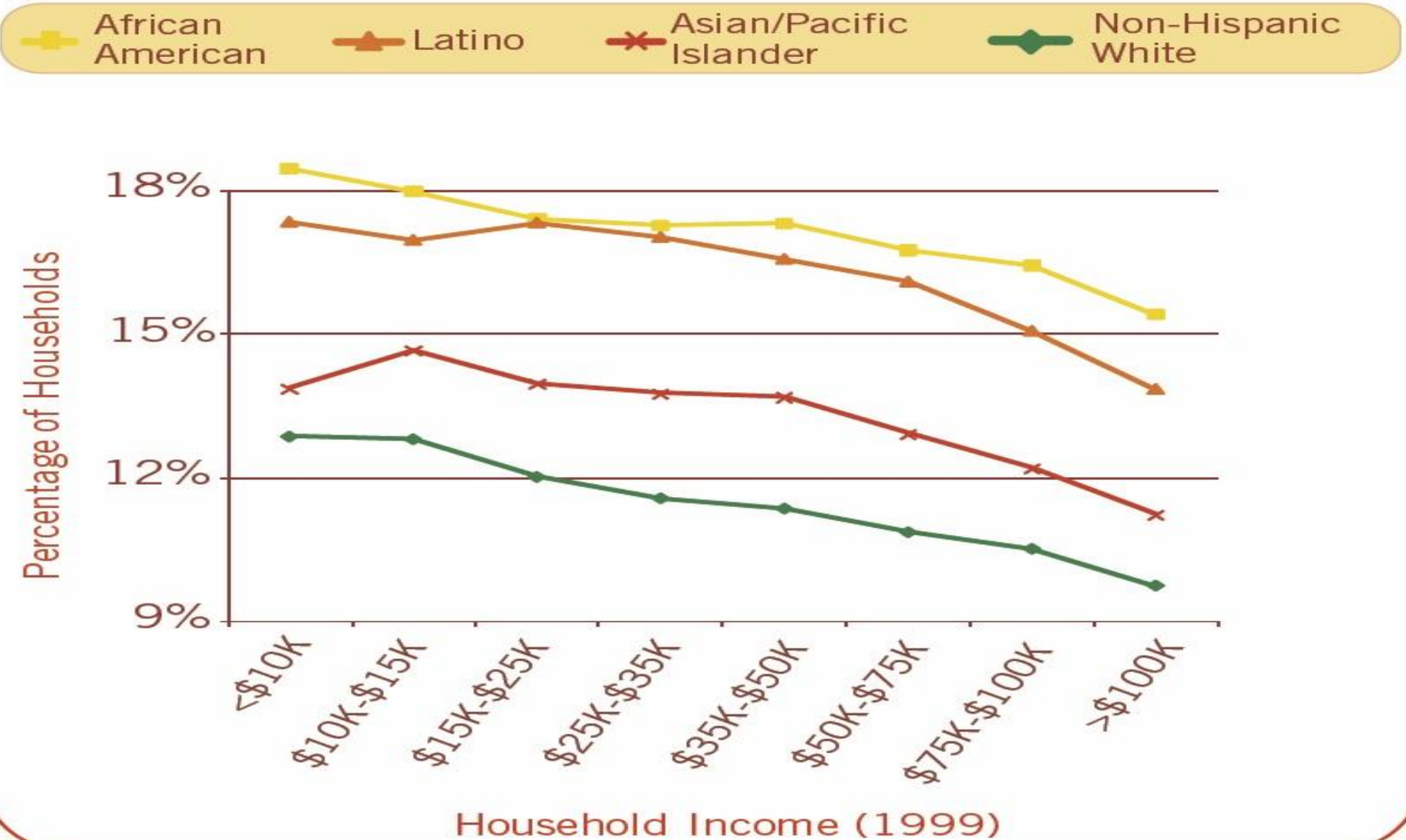
Facilities

- Cement Kiln
- Petroleum Refinery
- Power Plant

% People of Color

- Less than 37%
- 37% to 70%
- Greater than 70%

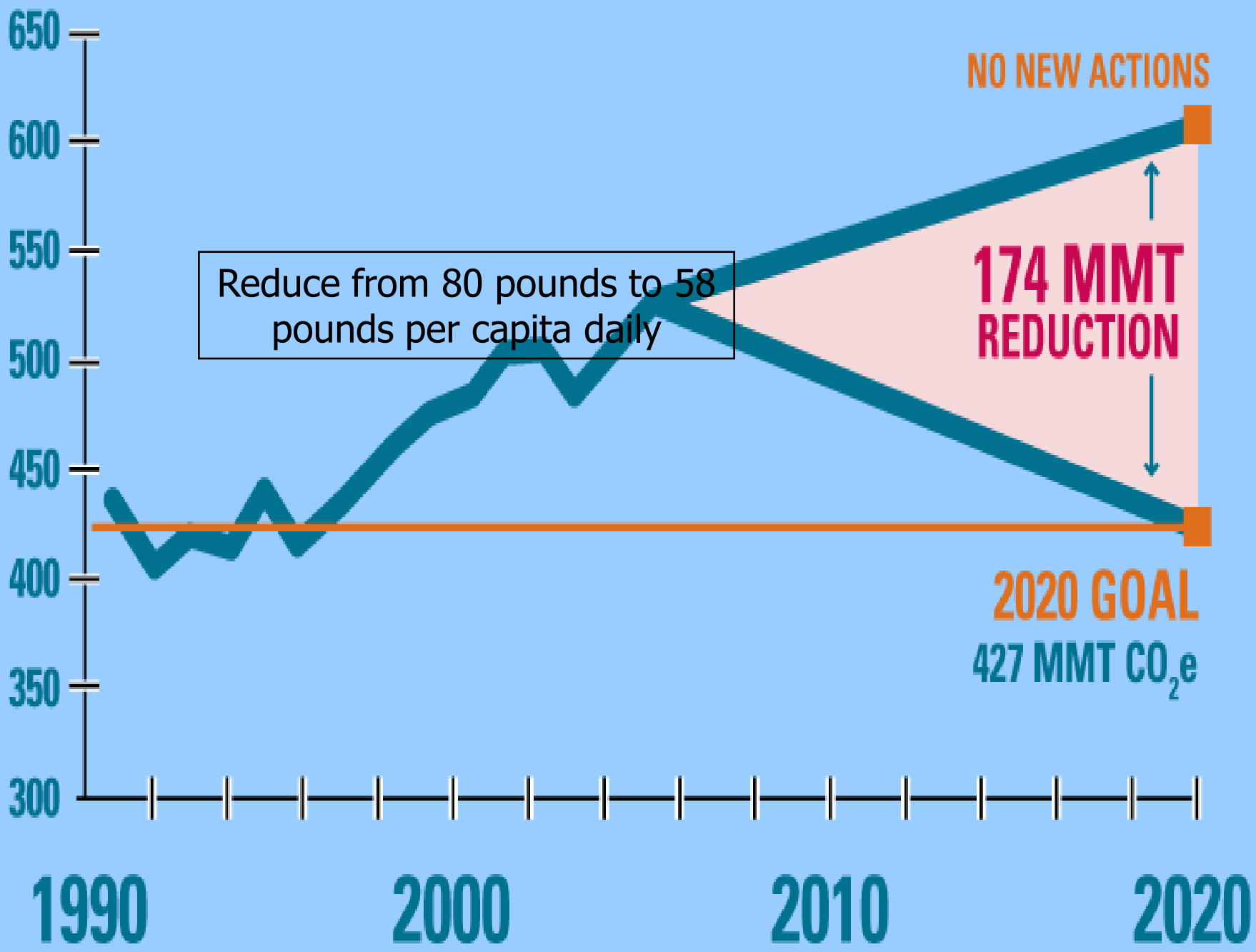
Figure 2: Percentage Households Within 2.5 Miles of any Facility by Income and Race/Ethnicity in California



**Low-income communities,
communities of color,
and communities of diversity
make up a disproportionate share of
the “near to pollution” residential
population and
bear the burden of
most pollution**

Assembly Bill (AB) 32





Reduce from 80 pounds to 58 pounds per capita daily

NO NEW ACTIONS

174 MMT REDUCTION

2020 GOAL
427 MMT CO₂e